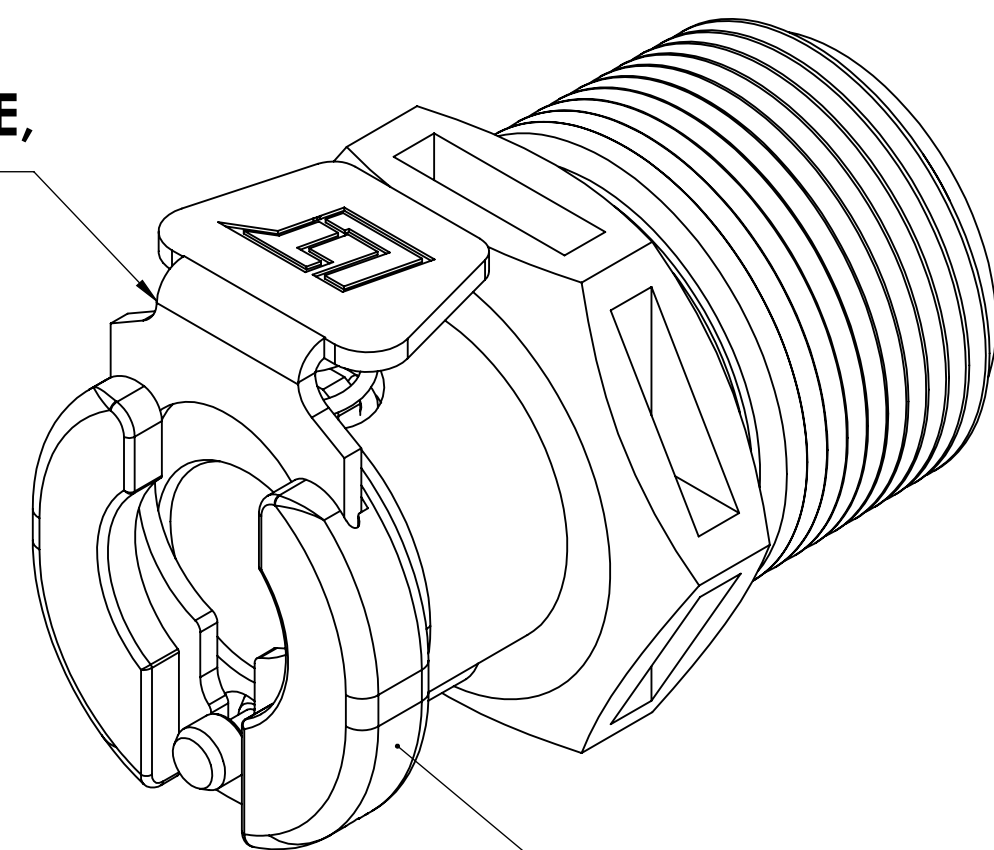
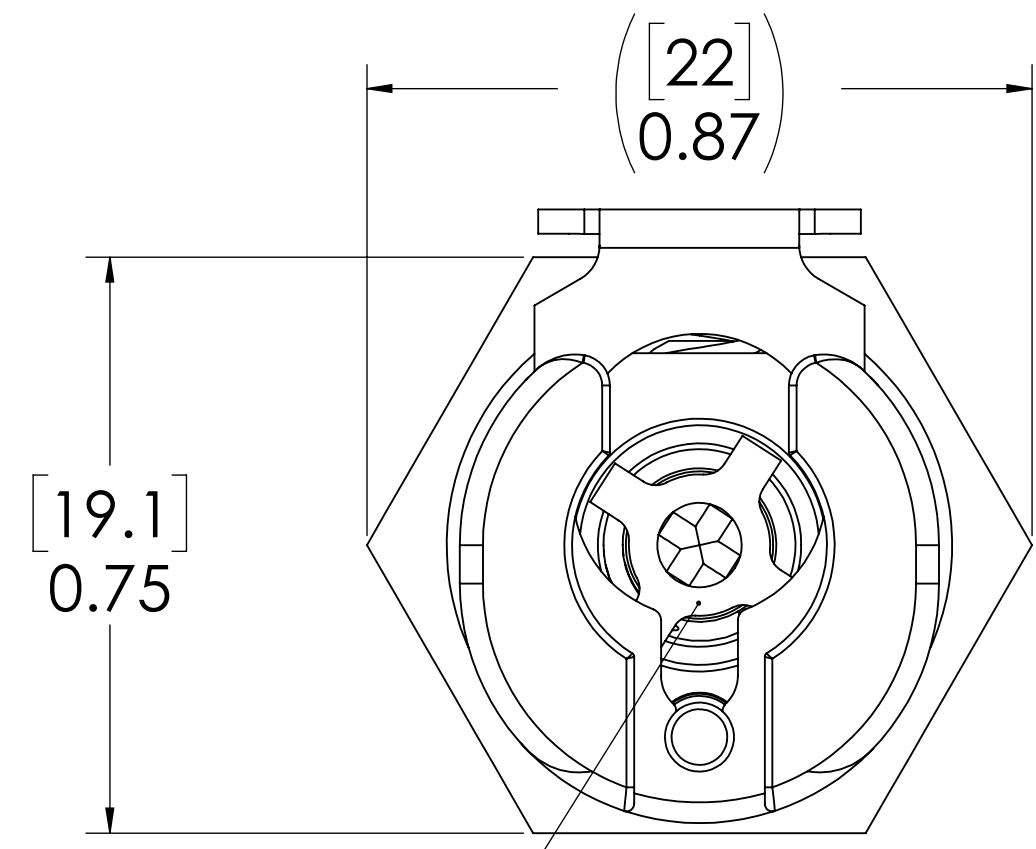


REVISIONS						
SHEET	ZONE	REV.	ECO	DESCRIPTION	DATE	APPROVED
1	ALL	A	50174	INITIAL RELEASE	10/22/2015	HRC
1	ALL	B	50242	UPDATE DWG TO CURRENT FORMAT & STANDARDS	1/9/2020	HRC

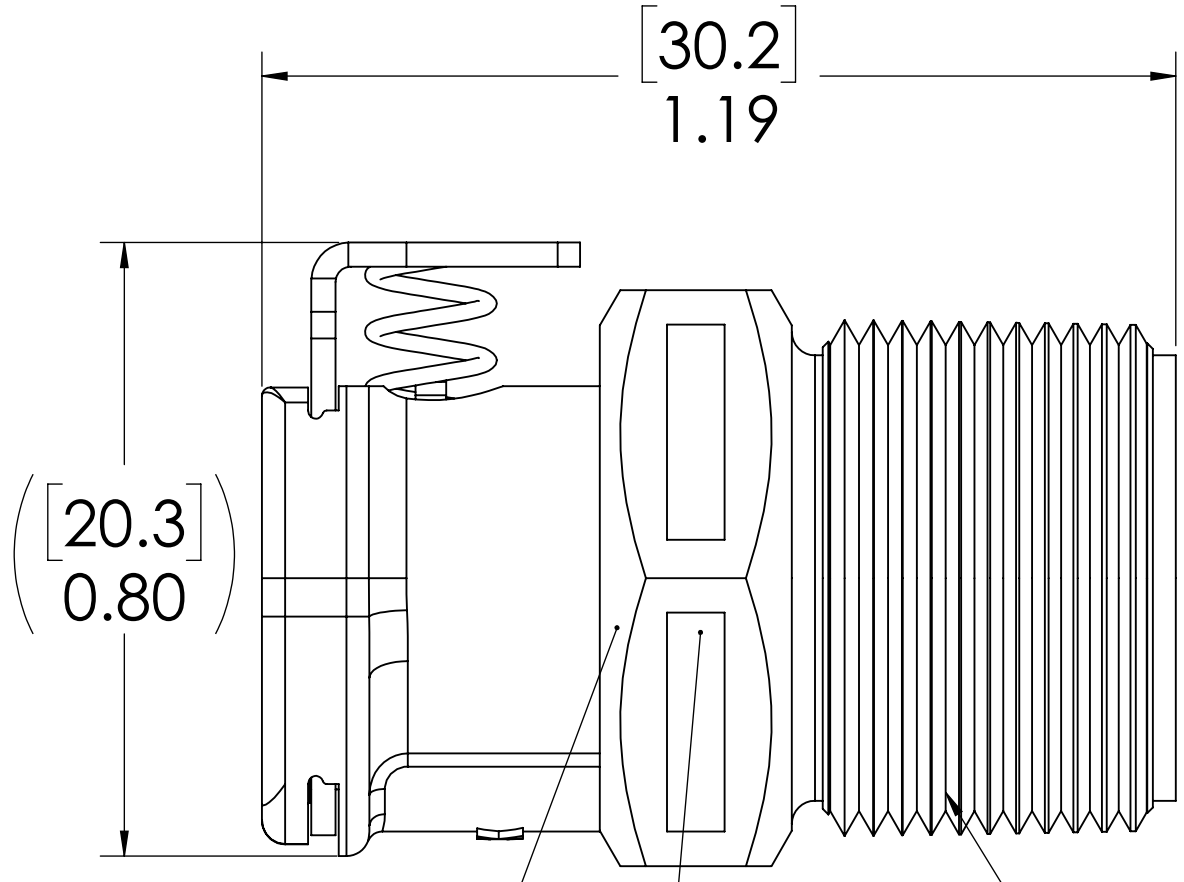


**LATCH HARDWARE,  
(STAINLESS STEEL)**

**SOCKET,  
(ACETAL)**



**VALVE,  
(ACETAL)**



**VALVE SPRING,  
INTERNAL  
(STAINLESS STEEL)**

**VALVE O-RING,  
INTERNAL  
(BUNA-N)**

**3/8" NPT  
(PIPE THREAD)**

- NOTES:**
- MATERIAL: ACETAL
  - COLOR: NATURAL WHITE
  - O-RING MATERIAL: BUNA-N
  - O-RINGS LUBRICATED WITH FOOD GRADE SILICONE OIL, 350 CST.

**FOR REFERENCE ONLY**

<small>UNLESS OTHERWISE SPECIFIED: DIMENSIONS ARE IN INCHES TOLERANCES: FRACTIONAL ± 1/32 ANGULAR, MACH ± 0.5 BEND ± 2 ONE PLACE DECIMAL ± 0.1 TWO PLACE DECIMAL ± 0.01 THREE PLACE DECIMAL ± 0.005 TWO PLACE DUAL (mm) [± 0.12]</small>	DRAWN	ER	10-25-17	
	CHECKED	HRC	10-25-17	
	ENG APPR.	HRC	1/9/20	
	MFG APPR.	BDB	1/9/20	
PRODUCTION	LS	1/9/20		<b>PART NO:</b> 20ACV-SB1-06  <b>DESCRIPTION:</b> <b>LinkTech 20AC Series Male Thread Female, Valved, 3/8" MNPT, Natural Acetal</b>
<small>PROPRIETARY AND CONFIDENTIAL THE INFORMATION CONTAINED IN THIS DRAWING IS THE SOLE PROPERTY OF LINKTECH LLC. ANY REPRODUCTION OR DISCLOSURE IN PART OR AS A WHOLE WITHOUT THE WRITTEN PERMISSION OF LINKTECH LLC IS STRICTLY PROHIBITED.</small>				<b>SCALE:</b> NTS <b>WEIGHT:</b> <b>REV</b> <b>C</b> 20AC200222 <b>B</b>
			SHEET 1 OF 1	